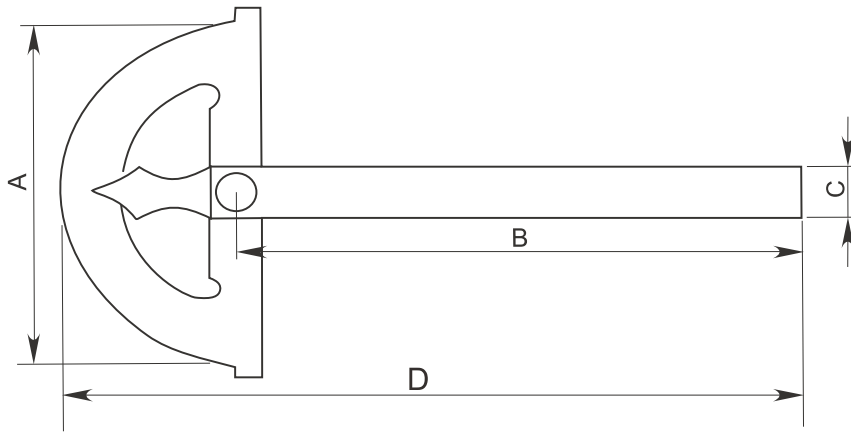
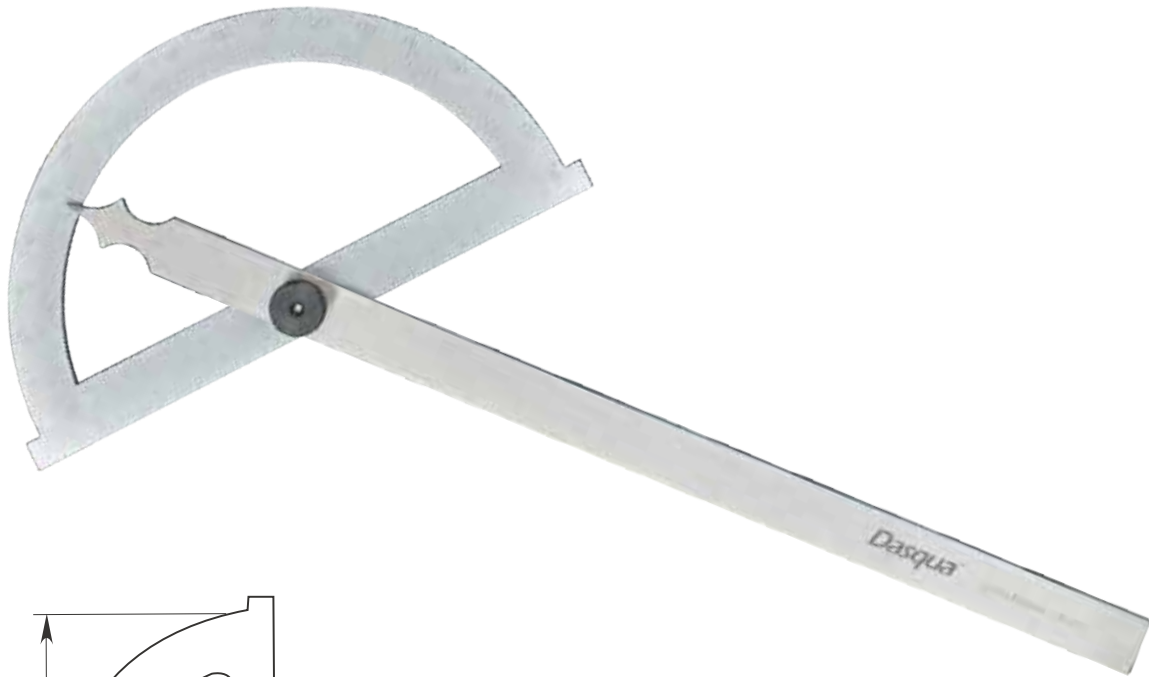


# PROTRACTOR



- ⚙️
 • Made of stainless steel
- |
 • Satin chrome finish, anti-rust and durable
- 🔒
 • Locking knob can hold any angle
- |
 • Multi-purpose, engineering drawing, angle measurement, architectural design, woodworking, length measurement, etc
- 🏆
 • Packaged in a beautiful and durable leather bag

Unit:mm

Code	Range	Graduation	Size(AxB)	D	C	Accuracy	Type
1011-1005	0-180°	1°	85x150	199	15	±30'	Solid Head
1012-1005	0-180°	1°	80x120	168	11	±30'	Open Head
1012-1010	0-180°	1°	120x150	220	14	±30'	Open Head
1012-1020	0-180°	1°	150x200	285	16	±30'	Open Head
1012-1030	0-180°	1°	200x300	413	20	±30'	Open Head
1012-1035	0-180°	1°	300x500	665.5	31.5	±30'	Open Head